

# SAP Office Migration Tool

## Optima Assets - Solution Package

The SAP Office Migration Tool moves attachments stored in the SAP database (SOFFCONT1) to an ArchiveLink compatible repository.

### CHALLENGE

Attachments created through SAP transactions using the “Create Attachment” option are stored in the SAP database by default, which is strongly unrecommended as it may negatively impact system performance and increment operational costs.

### WHO IS THIS SOLUTION FOR?

Any company that creates attachments using the “Create Attachment” option from GOS menu.

### SOLUTION OVERVIEW

This solution package will migrate attachments stored in SOFFCONT1 or an external repository to an ArchiveLink content repository while document integrity and metadata are preserved such as filename, creator, creation date, as well as any existing SAP business object relationship.

### KEY FEATURES

#### Document Integrity and metadata

The content integrity and metadata are preserved during migration.

#### Batch processing

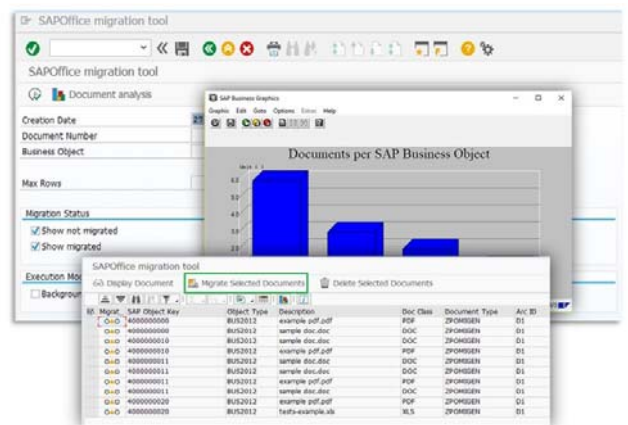
Content migration can be performed in batches and background processing.

#### Auto document-type selection

Document types can be automatically selected based on business object and file extension.

#### Document distribution analysis

A document distribution report is included to identify SAP Office top objects, file extensions and other information.



### ABOUT OPTIMA CONSULTING

We provide ECM strategy, design, implementation, and the management of large-scale enterprise content management solutions such as SAP, OpenText, Microsoft & Taulia. With over 60 consultants with average of 15 years around ECM and enterprise solutions we focused in implementing OpenText solutions around Content.

Please visit: [www.optimaecm.com](http://www.optimaecm.com)  
info@optimaecm.com